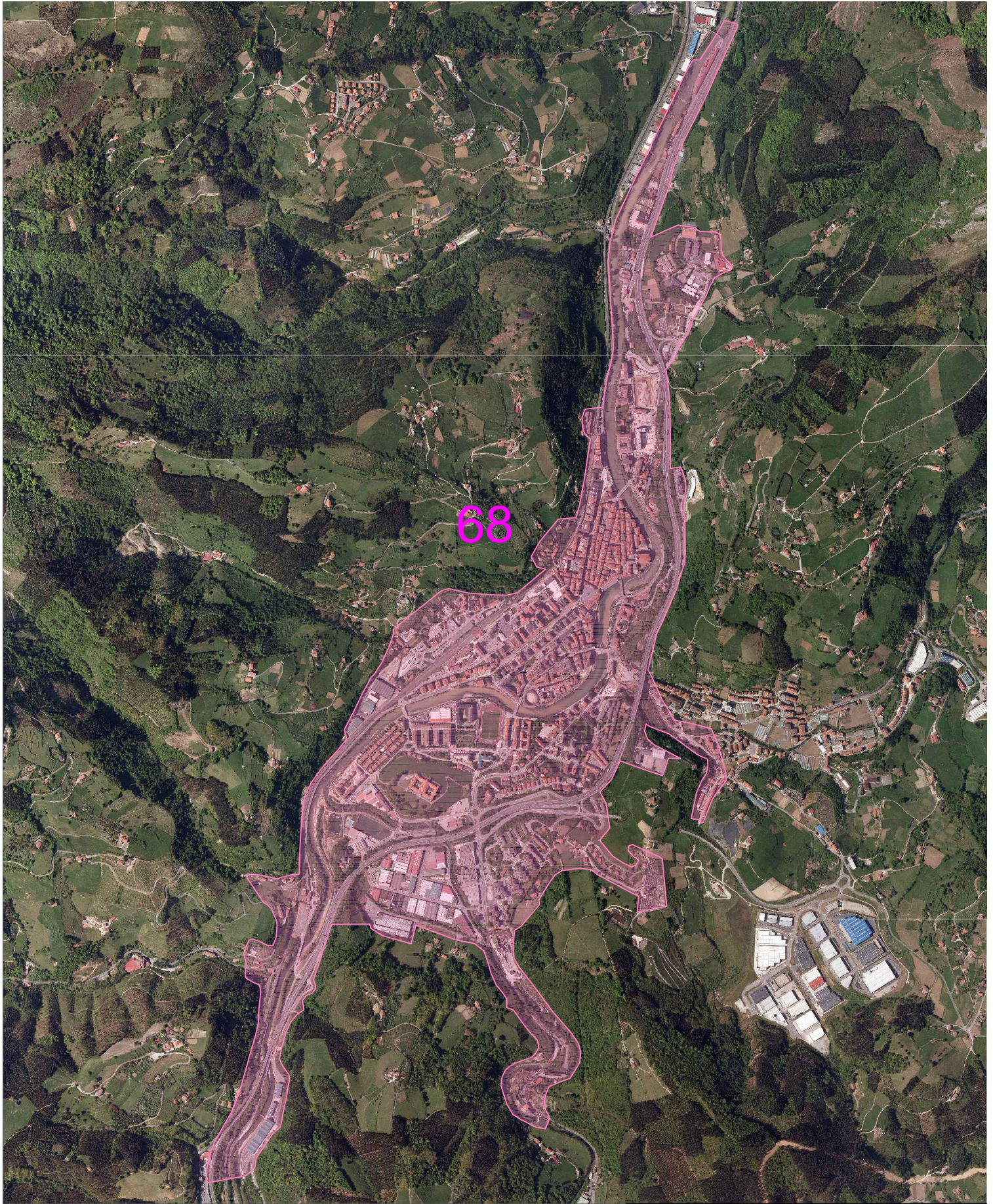


TOLOSA


Doiketa zenbakia / Número de ajuste
68

MINCURV saretaren bertsioa (*)	08012009_3.0
Versión de la rejilla MINCURV (*)	
MINCURV-GNSS batezbesteko errore koadratikoa (m)	0.006
Error medio cuadrático MINCURV-GNSS (m)	
Doiketaren batezbesteko errore koadratikoa (m)	0.036
Error medio cuadrático del ajuste (m)	
X ardatzeko translazio-parametroa (m)	-21.705
Parámetro de traslación en el eje X (m)	
Y ardatzeko translazio-parametroa (m)	89.647
Parámetro de traslación en el eje Y (m)	
Errotazio parametroa (gradu ehuntarrak)	0.00042614
Parámetro de rotación (grados centesimales)	
Eskala-faktorearen parametroa	0.99998204
Parámetro de factor de escala	

(*)08012009_3.0 = Sareta berria / Rejilla nueva
01012003_2.1 = Sareta zaharra / Rejilla antigua



68

	ESKALA / ESCALA	UDALERRIA / MUNICIPIO
	1/20.000	TOLOSA
	DOIKETA / AJUSTE	
	68	

Coordenadas puntos de control.xls

NUMERO	MUNICIPIO	NOMBRE CLAVO	TIPO	AJUSTE	XED50	YED50	COTA	XETRS89 (MINCURV)	YETRS89 (MINCURV)	XETRS89 (GNSS)	YETRS89 (GNSS)	h (elipsoidal)	XETRS89 (Ajustada)	YETRS89 (Ajustada)
701	TOLOSA	701	RURT	68	575773.457	4778454.031	68.713	575667.716	4778244.826	575667.632	4778244.789	117.971	575667.655	4778244.789
703	TOLOSA	703	RURT	68	575982.274	4778860.805	68.945	575876.539	4778651.593	575876.470	4778651.585	118.184	575876.477	4778651.548
705	TOLOSA	705	RURT	68	575601.932	4777843.141	72.412	575496.180	4777633.943	575496.132	4777633.918	121.695	575496.118	4777633.918
716	TOLOSA	716	RURT	68	575570.003	4777058.081	74.704	575464.232	4776848.886	575464.179	4776848.875	124.027	575464.165	4776848.876
723	TOLOSA	723	RURT	68	575733.083	4776700.224	95.334	575627.300	4776491.025	575627.235	4776491.011	144.665	575627.228	4776491.020
726	TOLOSA	726	RURT	68	575575.176	4776657.197	77.175	575469.395	4776448.003	575469.351	4776447.984	126.493	575469.325	4776448.000
729	TOLOSA	729	RURT	68	575677.520	4776267.213	79.392	575571.727	4776058.017	575571.649	4776058.052	128.718	575571.653	4776058.020
735	TOLOSA	735	RURT	68	575645.610	4775461.293	142.127	575539.798	4775252.100	575539.735	4775252.103	191.448	575539.719	4775252.118
742	TOLOSA	742	RURT	68	575175.078	4775628.074	98.676	575069.279	4775418.895	575069.195	4775418.927	148.011	575069.209	4775418.913
760	TOLOSA	760	RURT	68	575623.017	4775995.969	128.347	575517.219	4775786.775	575517.154	4775786.793	177.673	575517.144	4775786.783
763	TOLOSA	763	RURT	68	575256.275	4776004.967	91.407	575150.484	4775795.784	575150.404	4775795.802	140.740	575150.415	4775795.795
765	TOLOSA	765	RURT	68	575004.520	4775902.079	93.854	574898.731	4775692.904	574898.670	4775692.920	143.197	574898.666	4775692.918
768	TOLOSA	768	RURT	68	575040.282	4776439.585	80.255	574934.506	4776230.408	574934.451	4776230.397	129.593	574934.444	4776230.412
802	TOLOSA	802	RURT	68	574334.101	4775425.132	84.284	574228.313	4775215.979	574228.290	4775215.999	133.655	574228.257	4775216.006
804	TOLOSA	804	RURT	68	574322.647	4775798.233	80.669	574216.868	4775589.080	574216.819	4775589.101	130.026	574216.815	4775589.101
807	TOLOSA	807	RURT	68	574568.881	4776119.086	78.142	574463.106	4775909.924	574463.035	4775909.929	127.522	574463.051	4775909.937
808	TOLOSA	808	RURT	68	574622.651	4776166.843	77.886	574516.876	4775957.680	574516.832	4775957.692	127.233	574516.820	4775957.692
810	TOLOSA	810	RURT	68	574843.294	4776261.877	77.950	574737.517	4776052.706	574737.475	4776052.699	127.265	574737.458	4776052.715
818	TOLOSA	818	RURT	68	575534.685	4776407.147	77.708	575428.899	4776197.955	575428.800	4776197.862	127.056	575428.828	4776197.957
846	TOLOSA	846	RURT	68	574956.288	4775375.022	86.279	574850.487	4775165.850	574850.386	4775165.939	135.637	574850.420	4775165.874
849	TOLOSA	849	RURT	68	574594.872	4775547.499	83.176	574489.082	4775338.338	574488.996	4775338.376	132.516	574489.022	4775338.361